

FITMENT INSTRUCTIONS

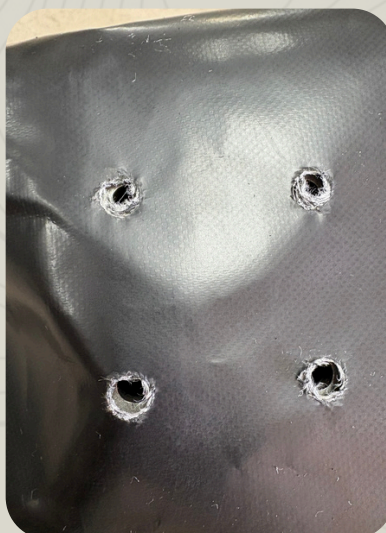
180 WEATHERSHADE AWNING FITMENT

TOOLS REQUIRED:

- 13 Spanner x 2
- 5 Allen Key
- 5mm Drill Bit
- 8mm Drill Bit
- Chamfer Tool
- Pop Rivet gun
- Button Head (Included with brackets)

TO FIT

1. Open Awning Box and unwrap the awning. Be careful to not cut the awning bag whilst unwrapping the awning.
2. Unzip the awning bag and remove the wrapping around the hinge of the awning.
3. Use a chamfering tool to open the four (4) holes at the hinge of the awning.



4. Insert M8 bolts on the existing four (4) holes of the awning hinge and through the mounting bracket.

Fasten using 2x 13 spanners from the top down.



5. Insert two (2) button head bolts with M8 washers in the two existing holes on the awning pan and the mounting brackets. Fasten using a 13 spanner and 5 Allen key.

NB: If the pre-laser existing holes in the awning pan can't be used, drill two (2) new holes that align horizontally with the existing holes and bracket, using a 8mm drill bit.

6. Open the awning and align the tension strap to your tensioning position on the last arm (3rd arm) of the awning.

NB: The Strap position is determined by the mounting surface, the strap can be fastened +/- 100 to 150mm from the edge of the arm.

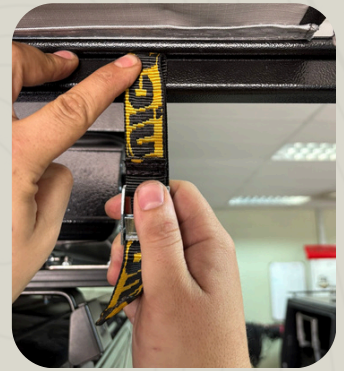


These images show how to align the tension arm with the 3d extruded arm, with the focus on the tensioning strap position..

7. Drill a hole using a 5mm drill bit, into the square arm of the awning to where you aligned the tensioning strap.



8. Fold the tensioning strap double at the end where the buckle is attached and puncture the folded strap to insert pop rivet to fix to the square arm.



9. Insert the pop rivet into the square arm and fasten the pop rivet to the arm with a pop rivet gun.

10. Hook your tensioning strap to a M8 bolt, or around a loadbar and enjoy the awning shade.



PLEASE DON'T HESITATE TO CONTACT US IF YOU NEED ANY SUPPORT REGARDING THE FITMENT.
THANK YOU FOR YOUR SUPPORT, WE HOPE YOU LOVE YOUR QUICK PITCH PRODUCT.